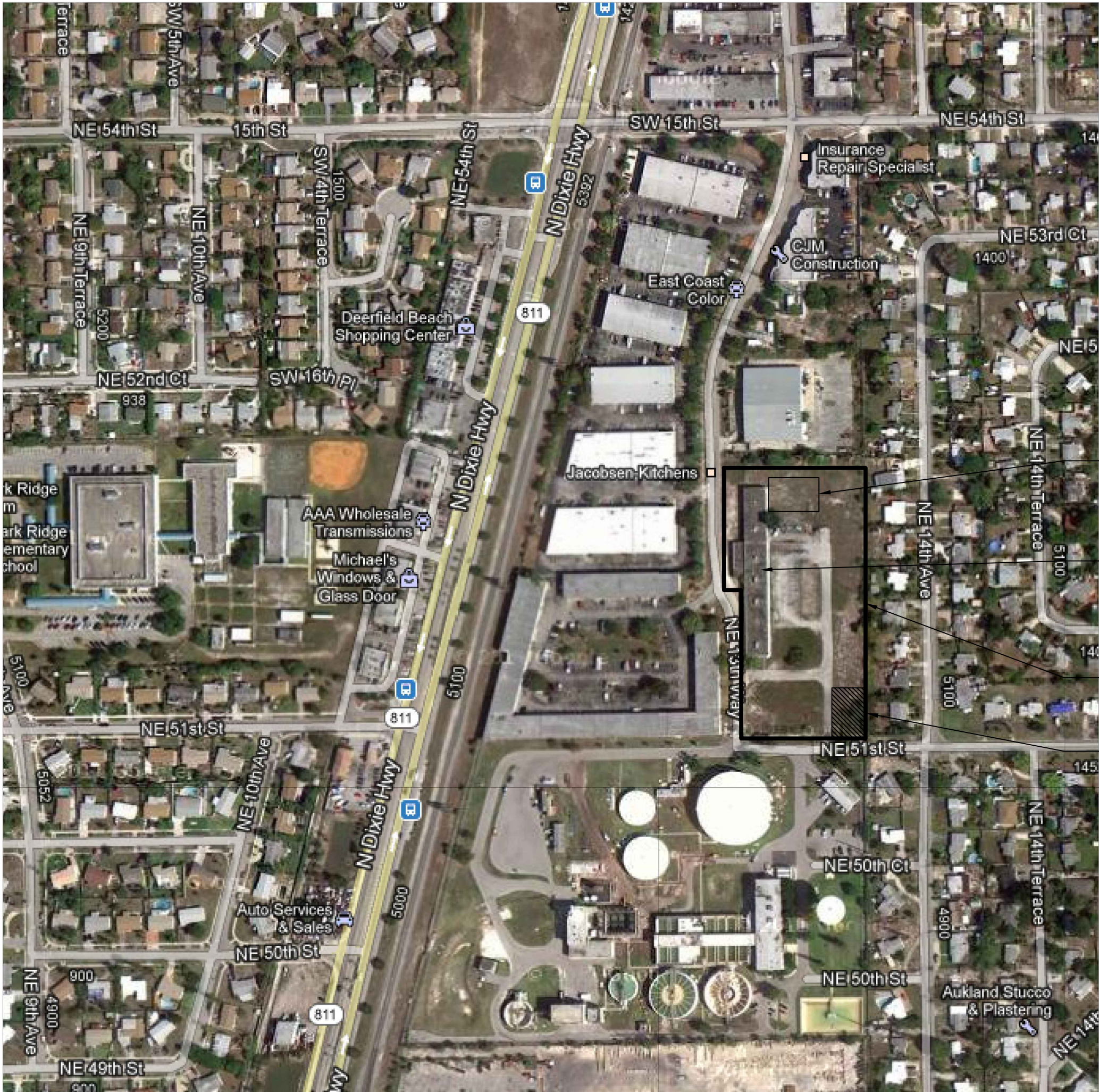


A PROPOSED TWO STORY WAREHOUSE FOR:

# RIVA MOTORSPORTS

5100 NE 13 WAY    POMPANO BEACH, FLORIDA 33064



AERIAL SITE PHOTO    NOT TO SCALE

GRAPHIC SYMBOLS

NORTH ARROW

SECTION CUT

DETAIL REFERENCE

DOOR NUMBER

WINDOW NUMBER

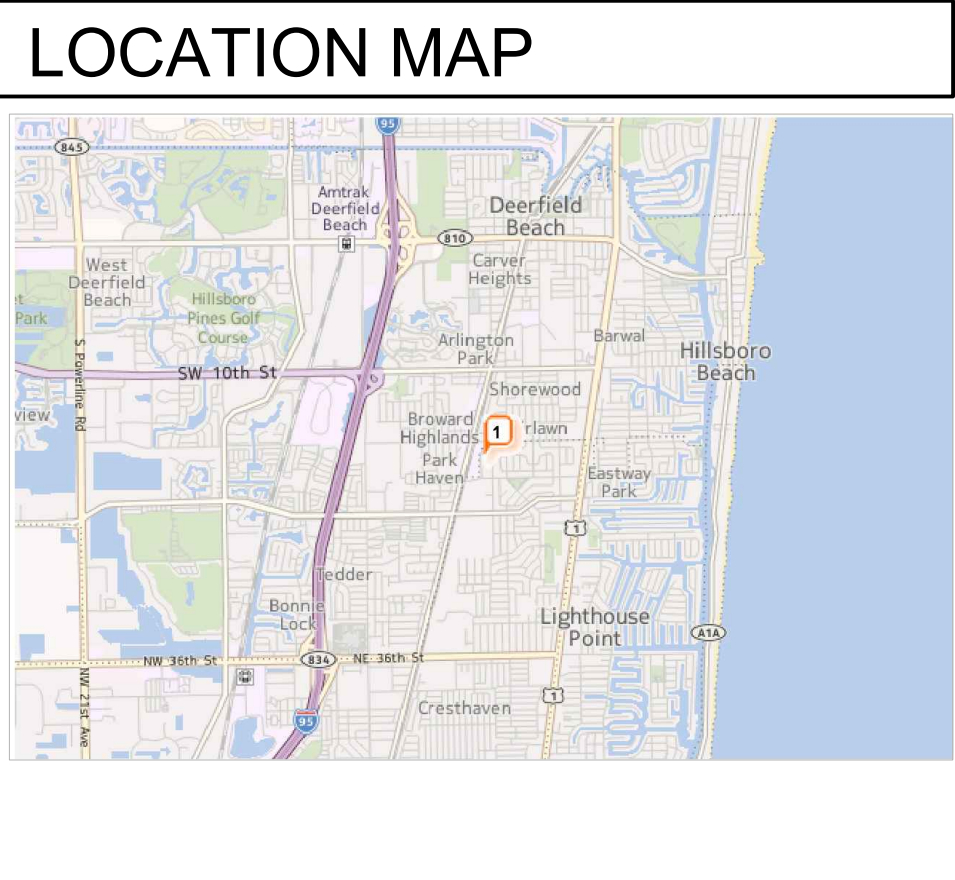
NOTE REFERENCE

REVISION

ELEVATION DESIGNATION  
ELEVATION NUMBER  
SHEET NUMBER

B/O  
N.T.S.  
A.F.F.  
U.O.N.

BY OTHERS  
NOT TO SCALE  
ABOVE FINISHED FLOOR  
UNLESS OTHERWISE NOTED



ARCHITECTURAL

CS-1 COVER SHEET

SP-1 SITE PLAN

SP-2 SITE PLAN DETAILS

A-1 FIRST FLOOR PLAN

A-2 SECOND FLOOR PLAN

A-3 ROOF PLAN

A-4 ELEVATIONS

A-5 ELEVATIONS, SECTION

LANDSCAPE

L-0 LANDSCAPE COVER SHEET

L-1 EXISTING TREE DISPOSITION PLAN & LIST

L-2 PLANTING PLAN, TABULAR DATA, & SPECS

L-3 IRRIGATION PLAN, NOTES, SCHEDULE & DETAIL

CIVIL

C0 CIVIL COVER SHEET

C1 WATER AND SEWER SERVICE CONNECTIONS PAVING AND DRAINAGE PLAN

C2 PAVING AND DRAINAGE - STANDARD DETAILS

C3 B.C.W.W.E.D. WATER AND SEWER STANDARD DETAILS

C4 POLLUTION PREVENTION PLAN

OWNER

RIVA MOTORSPORTS

3671 N DIXIE HIGHWAY  
POMPANO BEACH, FL 33064

steveb@rivamotorsports.com

OWNER:  
STEVE BAMDAS  
TEL.: (954) 785-4820 EXT 1016

LANDSCAPE ARCHITECT

EGS2

14121 SW 119 AVENUE  
MIAMI, FL 33186

bill@siegersuarez.com

PROJECT LANDSCAPE ARCHITECT:  
WILLIAM A. EAGER  
TEL.: (305) 274-2702 EXT 15

CIVIL ENGINEER

JOHN B SMITH ENGINEERS

1457 NE 4TH AVENUE  
FORT LAUDERDALE, FL 33304

johnbsmith@att.net

PROJECT ENGINEER:  
BOB SMITH, P.E.  
PHONE (954) 763-4177

ARCHITECT

ARCHITECTURAL ALLIANCE

612 S.W. 4TH AVENUE  
FT. LAUDERDALE, FL 33315  
PHONE (954) 764-8858  
FAX (954) 764-0731  
architecture@archall.net  
pebersole@archall.net

PROJECT ARCHITECT :  
PETE EBERSOLE

PLAN REVIEW DATA

APPLICABLE CODES  
A. FLORIDA BUILDING CODE - 2020 EDITION  
B. NATIONAL ELECTRIC CODE - 2015 EDITION  
C. N.F.P.A.-LIFE SAFETY CODE - 2015 EDITION  
D. FLORIDA FIRE PREVENTION CODE - 6TH EDITION  
WITH BROWARD COUNTY AMENDMENTS

OCCUPANCY TYPE  
A. GROUP S-2  
B. MEDIUM HAZARD STORAGE  
C. FULLY SPRINKLERED & FIRE ALARM

ZONING  
A. I-1 (Pompano Beach)

CONSTRUCTION TYPE  
A. TYPE I I I B UNPROTECTED ONE STORY  
B. NON - FIRE SPRINKLERED  
C. NEW ADDITION: CMU WALLS WITH PRECAST CONCRETE PANEL 2ND FLOOR & TWIN T ROOF SYSTEM  
D. ALTERATION LEVEL 3 PER FLORIDA EXISTING BUILDING CODE - 2020 ED.

CPTED

CP-1 CPTED PLAN

SITE LIGHTING

PH-1 SITE PHOTOMETRICS PLAN

project name  
A PROPOSED TWO STORY WAREHOUSE FOR:  
**RIVA MOTORSPORTS**  
5100 NE 13 WAY    POMPANO BEACH, FLORIDA 33064

revision dates  
REV 1: 6-15-21

consultant seal

ME  
AR0011636  
Pete M Ebersole

ARCHITECTURE  
LANDSCAPE ARCHITECTURE  
LAND PLANNING  
INTERIOR DESIGN  
GOVERNMENTAL PROCESSING  
AA26001446  
**ARCHITECTURAL ALLIANCE**  
612 S.W. 4TH AVENUE FORT LAUDERDALE, FLORIDA 33315  
TEL. (954) 764-8858 FAX : (954) 764-0731 E-MAIL : architecture@archall.net

project number  
21112

release date  
6-16-21

sheet description  
OVERSHEET

drawing number  
**DRC**  
**CS-1**  
**PZ21-12000024**  
**8/4/2021**